



Skegness Plan for Neighbourhoods - Call for Projects

Guidance Notes

About the opportunity for Skegness

- The Plan for Neighbourhoods is a **10-year, government-backed investment programme** to support the regeneration of towns and neighbourhoods through long-term, change led by local communities.
- The programme's three main aims are to: **help create thriving places, build stronger communities, and allow local people to take back control** over their area's future.
- **75 places** have been chosen to be part of the programme and will receive up to £20 million over a 10-year period.
- **Skegness** has been chosen as a neighbourhood that will receive Plan for Neighbourhood Funding.
- **Now, Skegness Neighbourhood Board is seeking expressions of interest for projects which could be included in the plan that the Board is coming up with for Skegness, based on feedback from the community**
- This is the **first stage** of a process to choose projects. There will be more work before any projects are finalised and included in the plan.
- This is not a one off opportunity, we will be seeking project ideas throughout the 10-year period of the Plan for Neighbourhoods programme.

What sort of projects is the Board looking for?

The Skegness Neighbourhood Board is responsible for coming up with a 10-year vision for the future of the town which fits with the aims and objectives of the Plan for Neighbourhoods programme. This vision will be based on feedback from the community. The ideas that we get through this call for projects will also help to create this vision.

Over the 10-year period of the programme, 75% of the funding has to be spent on capital projects, so physical projects and initiatives, whilst the rest - 25% - can be spent on revenue projects, meaning activities that involve people. The Board is particularly keen to hear from capital projects.

All projects should:

SKEGNESS

Neighbourhood Plan

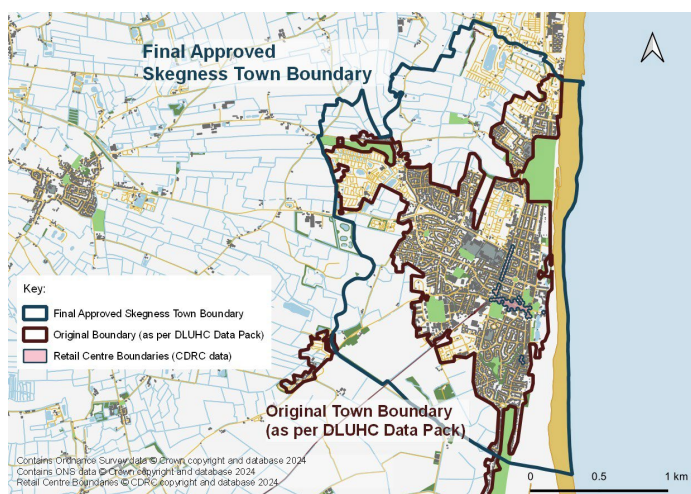
Together for Skegness

- **Fit with the focus of the Plan for Neighbourhoods Programme** which is to improve the physical environment – for example, buildings, public spaces – and the activities and services offered in places, bringing improvements to the everyday lives of people in these communities.
- **Contribute to at least one of the aims of the programme** - thriving places, stronger communities, and allowing people to take back control.
- **Fall within one or more of the themes** which have already been given the go-ahead which can be funded through the programme. This list of interventions is included at Appendix A.
- **Fit with community needs** that have come out of previous consultation. This previous consultation identified that priorities for local people include:
 - Safer, cleaner streets
 - A better town centre experience
 - More things to do all year round
 - Better transport links
 - Better amenities for families and young people
 - Improvements to roads
 - Better job and training opportunities

Consultation is continuing to take place to understand what people in Skegness need. Further information on the last consultation can be found [here](#)

Where can projects be located?

Projects must be located and/or deliver activity within the defined Skegness Plan for Neighbourhoods intervention area, as defined by government and shown in the map below.



SKEGNESS

Neighbourhood Plan

Together for Skegness

Who can submit a proposal?

Proposals are welcome from:

- Community and voluntary organisations
- Local public sector bodies
- Education providers
- Businesses or business partnerships
- Cultural or heritage organisations.

What should the projects aim to achieve?

At this stage there is no set list of outputs and outcomes for the Plan for Neighbourhoods Programme. You should think about the types of outputs and outcomes your activity would achieve.

**An output is the direct, product or service from an activity. Outputs measure the benefits that specific projects or programmes achieve (e.g. individuals and businesses) and areas. Some examples of outputs might be:*

- *Amount of commercial buildings developed or improved*
- *Amount of green or blue space created or improved*
- *Amount of new or improved cycleways or paths*
- *Amount of public realm created or improved*
- *Number of rehabilitated premises*
- *Amount of rehabilitated land*
- *Number of facilities supported/created*
- *Number of neighbourhood improvements undertaken*
- *Number of Tourism, Culture or Heritage assets created or improved*
- *Number of households receiving support*
- *Number of local events or activities*
- *Number of people participating in sports and recreational activities*
- *Number of people reached*
- *Number of businesses attracted to the area*

**Outcomes are the result of outputs (i.e. they are longer term achievements). Outcomes are the events, or changes that show progress toward a project or programme's goals. Some examples of outcomes might include:*

- *Increased footfall*
- *Reduced vacancy rates*
- *Increase in visitor spending*
- *Reduction in neighbourhood crime*
- *Increased perception of safety*



Funded by
UK Government

SKEGNESS

Neighbourhood Plan

Together for Skegness

- *Increased use of cycleways or paths*
- *Increase in the number of people engaged in community-led arts, cultural, heritage and creative programmes*
- *Increase in the number of active or sustained participants in community groups*

What is the deadline for submitting my project proposal and where should it be sent?

The deadline for submitting your project ideas is **5pm, 28th October 2025**. This is to allow a consideration of project proposals in time for a submission to government at the end of November. There will be further opportunities for project ideas to come forward beyond this time.

All proposals must be emailed to hello@shapingskegnesstogether.co.uk by this deadline. Alternatively, an online version of the form can be found on the [Skegness Neighbourhood Board website](#)

How will the proposals be assessed?

At this stage, proposals are being assessed as to how they fit with the programme objectives and how they meet community needs in Skegness. The assessment framework is included at Appendix B. If selected for further consideration, projects will be asked to provide more information which will be focused more on costs, deliverability, risk and impact.

For further information or advice, please contact hello@shapingskegnesstogether.co.uk

Appendix A: Pre-approved interventions

The government have produced a list of pre-approved interventions, under 8 themes that local authorities and Neighbourhood Boards can use for the Plan for Neighbourhoods programme. These are shown below. Further details and examples of the types of activities that might be funded under each intervention can be found here: [Pre approved interventions](#)

Theme: Regeneration, high streets and heritage

- Funding for improvements to town centres, neighbourhoods, and high streets, including capital spend and running costs
- Creating and improving green spaces, community gardens, watercourses and embankments in the local area, along with incorporating natural features into wider public spaces
- Support for non-domestic energy efficiency measures and decarbonisation in local businesses, high streets, and community infrastructure
- Funding for new community and neighbourhood infrastructure projects, or for improvements to existing ones, including facilities that house public services or enhance community resilience to natural hazards, such as flooding. This could cover both capital spend and operational costs

SKEGNESS

Neighbourhood Plan

Together for Skegness

- Enhanced support for arts, cultural, heritage and creative activities, projects and facilities and historic institutions that make up the local cultural heritage offer
- Funding for local arts, cultural, heritage and creative initiatives
- Investment and support for digital infrastructure for local community facilities

Theme: Housing

- Provide safe and supportive environments for people with experience of homelessness and rough sleeping
- Modernisation of social housing
- Support wider neighbourhood renewal by improving the attractiveness and liveability of homes and their surroundings
- Provide healthy and climate-resilient homes support locally
- Establish land trusts for the purpose of creating community-led housing to meet local needs
- Support local community initiatives that support people in bringing down their home energy bills and improve the energy efficiency of their homes

Theme: Work, productivity and skills

- Support to improve awareness of, and access to, local provision that moves people closer to and into sustained employment, in line with an area's Get Britain Working Plan (England and Wales only)
- Enabling community wealth building
- Developing and expanding existing local business support and networks for smaller businesses and social enterprises
- Skills provision tailored to local opportunities and skills gaps, such as those identified in an area's Local Skills Improvement Plan (England only)
- Funding to support the development, improvement, and promotion of the visitor economy, such as local attractions, historical trails, cultural tours, campaigns and other related tourism products

Theme: Cohesion

- Measures to improve community cohesion
- Funding for impactful volunteering and social action projects to develop social and human capital in local place
- Investment in capacity building and infrastructure support for local civil society, youth and community groups

Theme: Health and wellbeing

- Supporting community-level health provision
- Integration and co-location of health and wellbeing services
- Funding for local sport and activity facilities, events, teams and leagues, to foster community engagement and connection
- Funding to support preventative public health initiatives and campaigns

SKEGNESS

Neighbourhood Plan

Together for Skegness

- Provide drug and alcohol support for people with experience of homelessness and rough sleeping

Theme: Transport

- Support for active travel enhancements in the local area
- Funding can be used to improve local bus services
- Funding for new, or improvements to local road networks to improve access within and to the town
- Funding to improve rail connectivity and access
- Reducing vehicle emissions

Theme: Safety and security

- Design and oversight of the built and landscaped environment to 'design out' crime and encourage positive behaviour
- Policing interventions to target crime prevention in specific locations, in particular town centres
- Interventions to tackle anti-social behaviour, crime and minimise reoffending
- Co-location of crime reduction services
- Improved town centre management
- Initiatives to reduce burglary

Theme: Education and opportunity

- School-based programmes to support young people's development
- Support to both reduce levels of child poverty and to prevent the negative impacts of child poverty on children and families
- Support for families and young children
- Funding to help families with the cost of childcare where it may alleviate cost of living pressures, or support employment
- Support for growing the local social economy, including community businesses, cooperatives and social enterprises
- Support for community-based learning and development

SKEGNESS

Neighbourhood Plan

Together for Skegness

Appendix B: Assessment Framework

	1	2	3	4
Alignment				
Alignment with overall focus of the Plan for Neighbourhood Programme / pre-approved interventions.	Limited alignment	Some alignment	Good alignment	Very strong, clear alignment
Alignment with the three strategic objectives of the Plan for Neighbourhoods programme	Limited alignment	Some alignment at a general level	Strong, clear alignment with at least one strategic objective	Strong, clear alignment with two or more strategic objectives
Impact				
Responds to identified local challenges / needs identified through consultation	No link to identified local challenges / needs	Limited link to identified local challenges / needs	Good link to identified local challenges / needs	Strong / transformative link to identified local challenges / needs
Impact	No evidence / potential for positive impact in community.	Limited potential for positive impact in community	Some / good potential for positive impact in community	Strong potential for positive impact in community
Deliverability				
Alignment with one or more of the pre-approved interventions	Does not fit with a pre-approved intervention.	Alignment with a pre-improved intervention at a general level	Good clear alignment with at least one pre-approved intervention	Strong, clear alignment with two or more pre-approved interventions]

SKEGNESS

Neighbourhood Plan

Together for Skegness

	1	2	3	4
Deliverability in first investment period of the programme	High level of risk that project will fail to deliver as outlined or evidence /monitoring detail will not be as required.	Moderate level of risk to project delivery or delivery of monitoring requirements	Limited delivery risk	Minimal delivery risk